

HORMIGÓN		ACERO	
ELEMENTO ESTRUCTURAL	RESIST. (N/mm ²)	TIPO	RESIST. (N/mm ²)
CIMENTACIÓN	25	B500S	500
RESTO DE LA OBRA	25	B500S	500



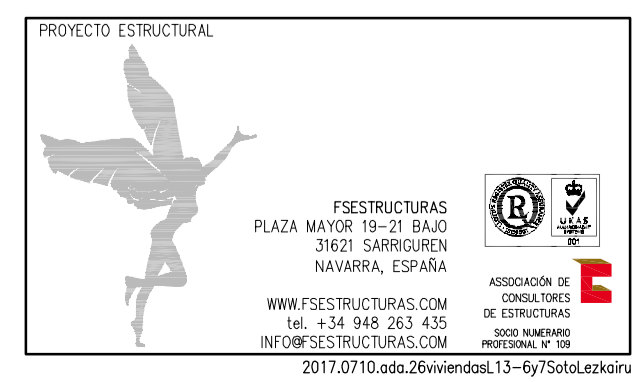
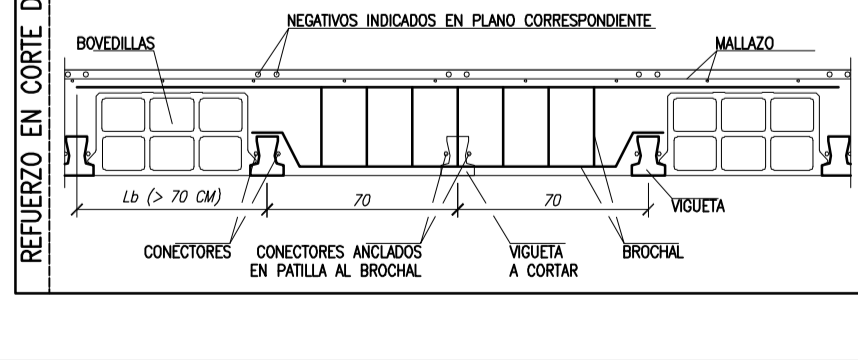
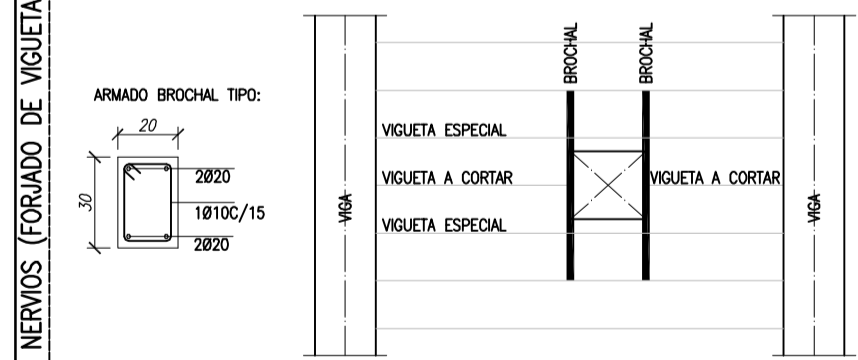
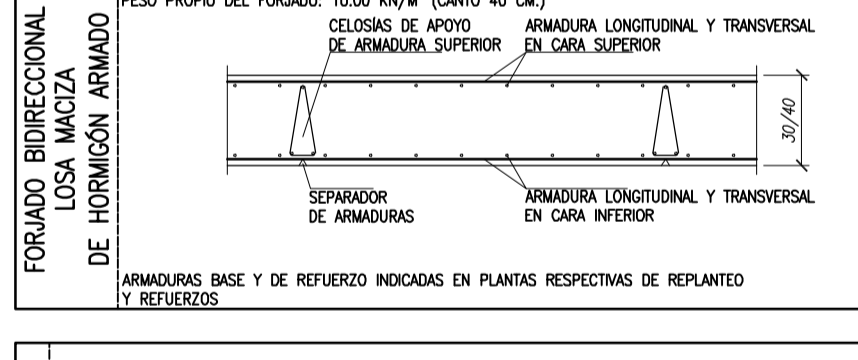
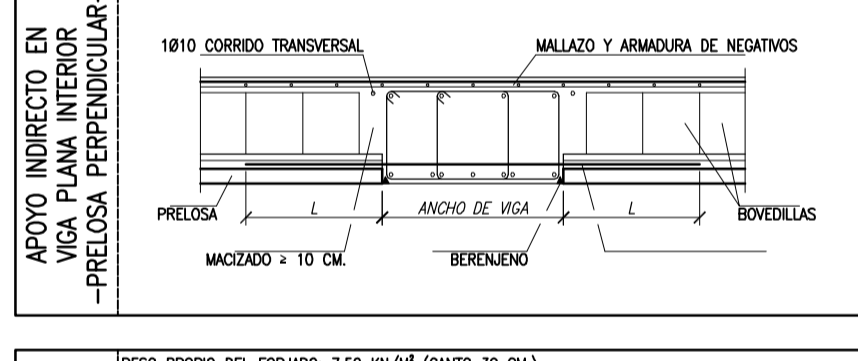
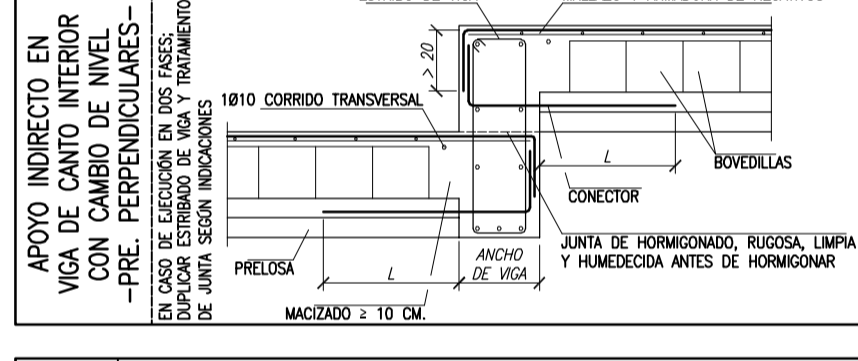
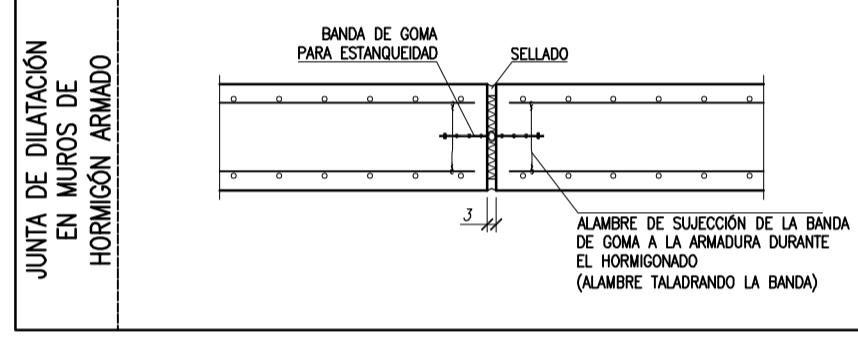
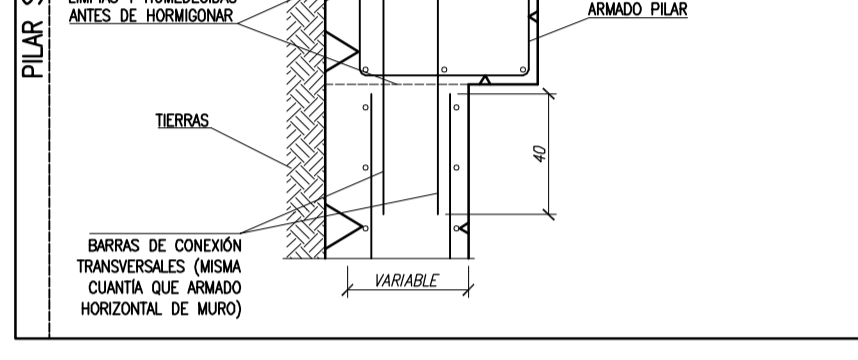
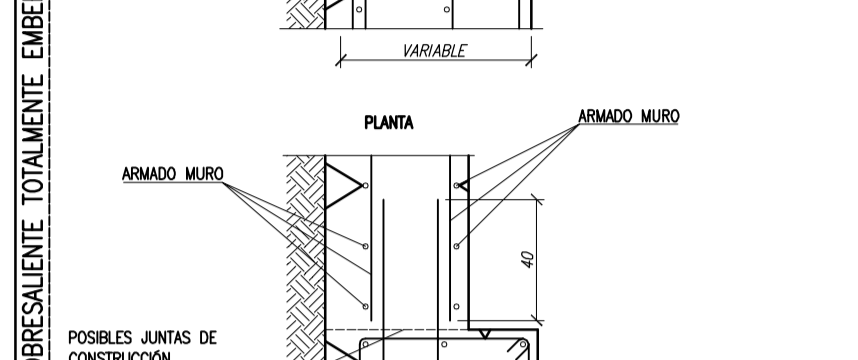
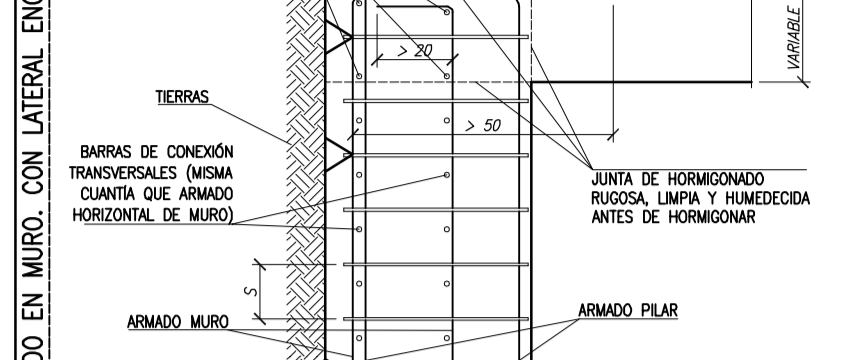
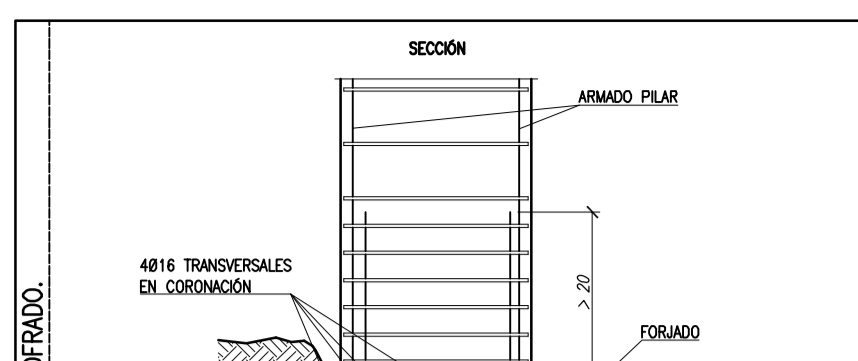
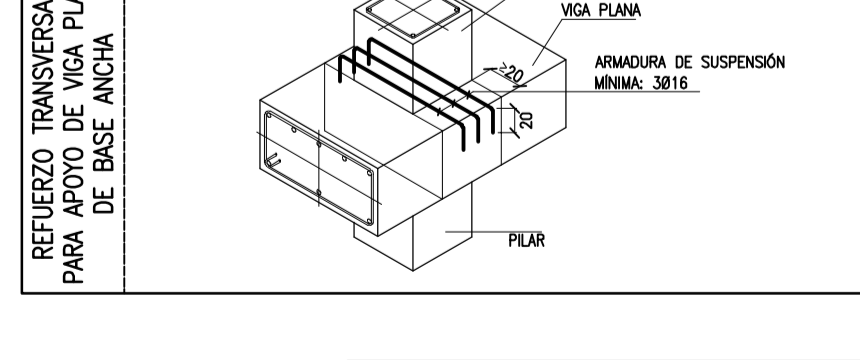
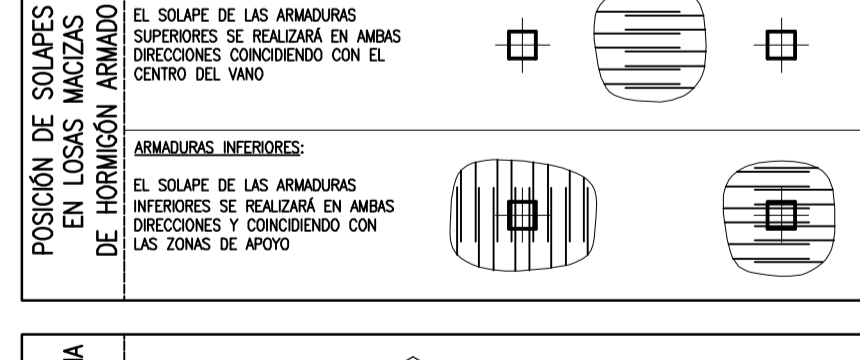
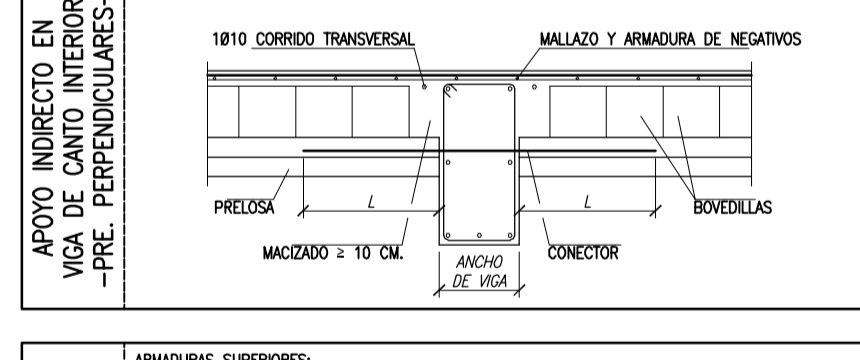
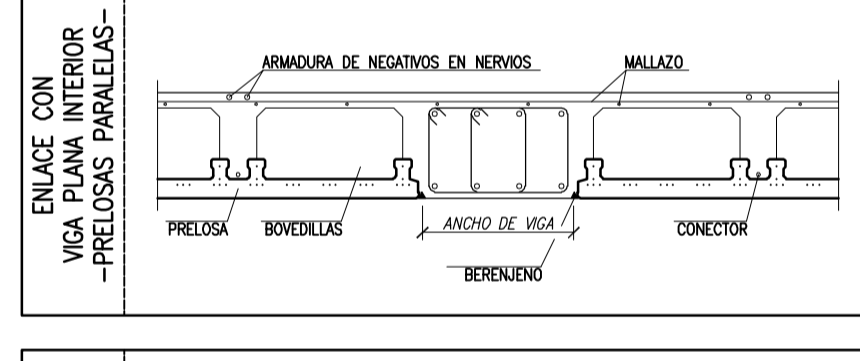
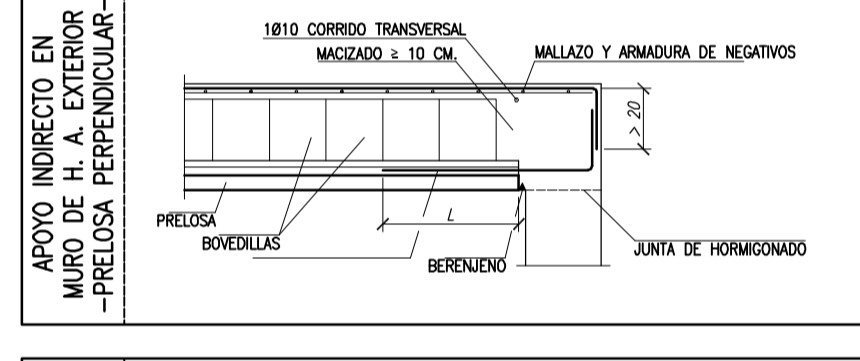
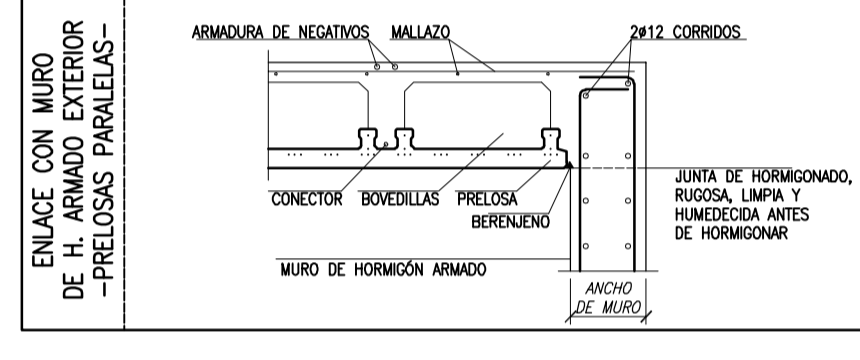
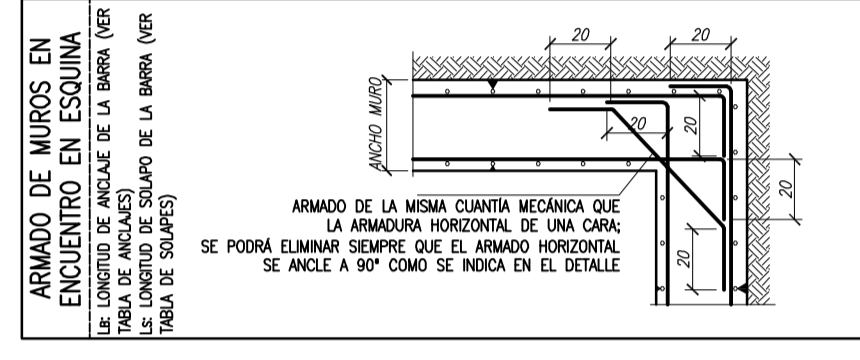
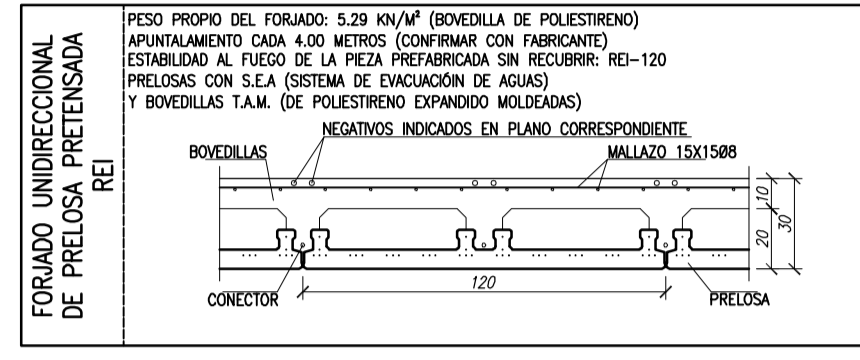
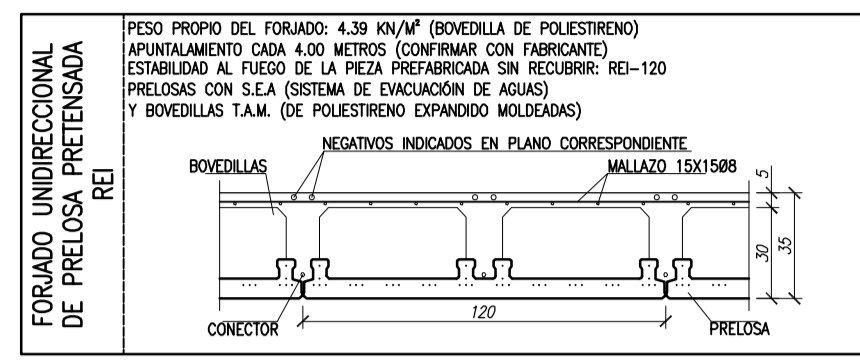
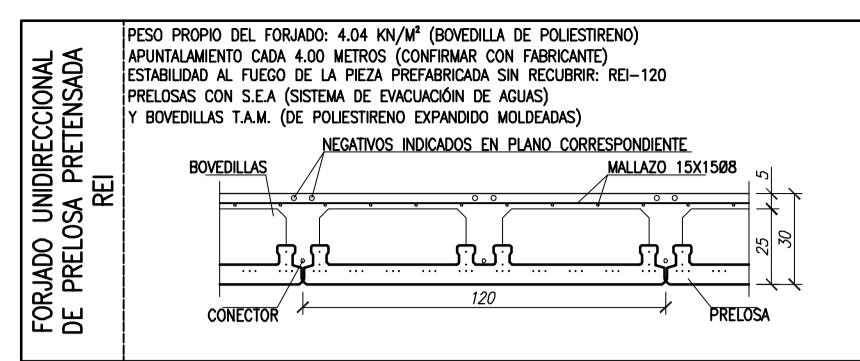
ACERO Y DIÁMETRO	EN PILARES	EN MUROS	EN VIGAS, FORJADOS Y LOSAS
B500S	30 CM	30 CM	30 CM
B8	30 CM	30 CM	30 CM
B12	40 CM	45 CM	45 CM
B16	55 CM	60 CM	60 CM
B20	70 CM	75 CM	75 CM
B25	85 CM	90 CM	90 CM



ACERO Y DIÁMETRO	EN VIGAS	EN LOSAS
B500S	30 CM	30 CM
B8	30 CM	30 CM
B12	40 CM	45 CM
B16	55 CM	60 CM
B20	70 CM	75 CM
B25	85 CM	90 CM



ACERO Y DIÁMETRO	EN VIGAS	EN LOSAS
B500S	30 CM	30 CM
B8	30 CM	30 CM
B12	40 CM	45 CM
B16	55 CM	60 CM
B20	70 CM	75 CM
B25	85 CM	90 CM



26 VIVIENDAS, GARAJES Y TRASTEROS
 PARCELA L13.6 Y L13.7. LEZKAIRU
PROYECTO EJECUCIÓN ESTRUCTURAL
 TECHO DE SÓTANO -1: REPLANTEO Y DETALLES
 DIN A1 1/100
E10
 PROMUEVE: EQUIPO REDACTOR: CARLOS BEA CERRALDI, ARQUITECTO. COAVN Nº3.484
 VÍCTOR LIZARRAGA ECHEVERRÍA, ARQUITECTO. COAVN Nº2.536
 ENCARNI ORTUÑO VARGAS, ARQUITECTO. COAVN Nº3.490
 ADANIA RESIDENCIAL S.L. POLIGONO DE CORDOVILLA CALLE B, Nº4 TFNO. 948.213131
 NOVIEMBRE 2017